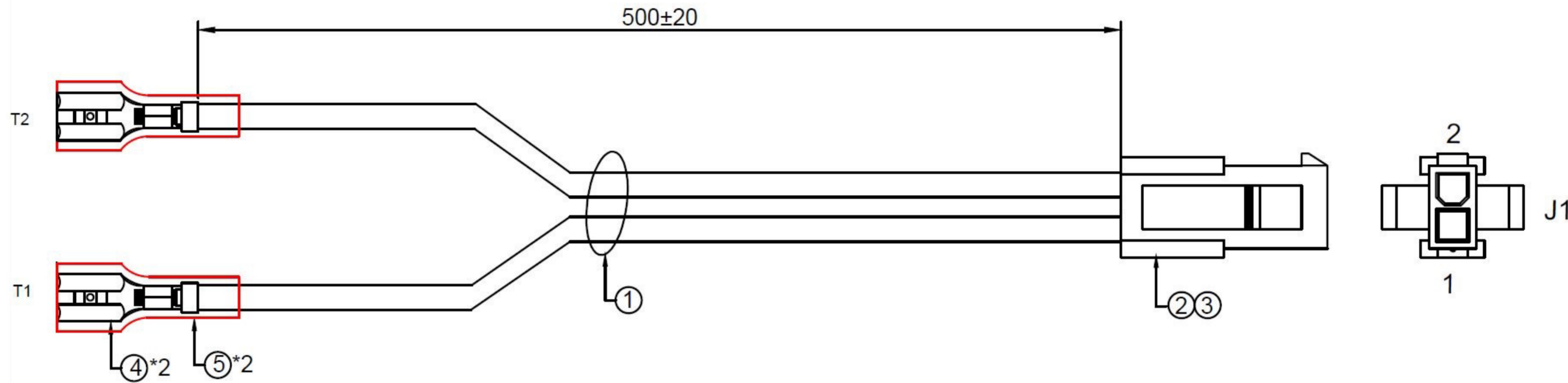


REV	DATE	DESCRIPTION	INIT
1	22.11.2019	created drawing	DM

Electrical Properties:  
 1. It should have no any open or short, Miswiring, or intermittent failures.  
 2. The cable shall be 100% electrically tested.

RoHS

From	Pin#	To	Pin#
T1	Red	J1	1
T2	Gray	J1	2



Terminal Type	Crimping Specification	Wire Type	Crimp Height	Crimp Width	Pull Force
39-00-0040	16#	16#	1.05±0.10	1.55±0.20	≥6.5Kfg

No	Material	Description	Qty	MNF.Name
1	Wire	UL1007 16AWG, 80°C 300V	2Pcs	YD
2	Terminal	39-00-0081	2Pcs	Molex
3	Housing	39-01-2021	1Pc	Molex
4	Terminal	ST1870802-30C, 4.75*0.8mm, Tin plated, Non-insulated	2Pcs	QW
5	H/S/T	UL black heat shrink tubing	2Pcs	Woer

		Elektrosil GmbH Ruhrstraße 53 22761 Hamburg		
		MATERIAL xxx	DRAWING TITLE EM-50.0586	
DRAWN BY DM	DATE 22.11.2019	SIZE A2	DRAWING NUMBER EM50.0586.001.A	REV 1
CHECKED BY JK	DATE 25.11.2019	SCALE 1:2	WEIGHT(kg) XXX	SHEET 1/1
DESIGNED BY ET	DATE 20.11.20109			